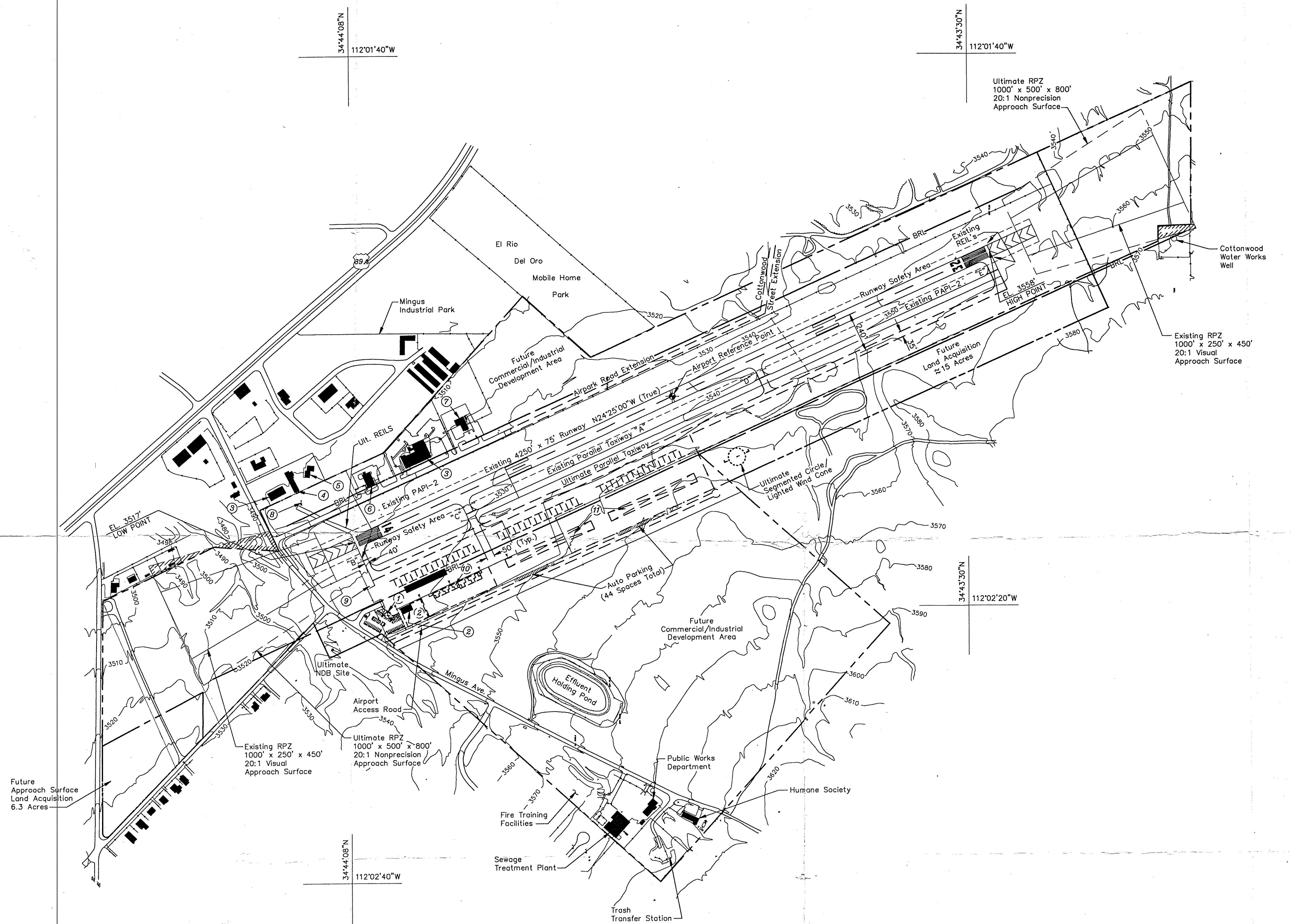


BUILDINGS/FACILITIES		
EXISTING	ULTIMATE	DESCRIPTION
--	(1)	TERMINAL BUILDING/PARKING
(2)	(2)	COTTONWOOD AIR SERVICE HANGAR (FBO)
(3)	--	VACANT
(4)	--	COTTONWOOD AIRPARK INC.
(5)	--	COTTONWOOD AIRPARK INC.
(6)	--	ADVENTURE'S OUTPOST
(7)	--	WASTE MANAGEMENT OF VERDE VALLEY
(8)	--	FUEL STORAGE
(9)	--	POWER VAULT
--	(10)	T-HANGAR
--	(11)	T-SHADE

LEGEND		
EXISTING	ULTIMATE	DESCRIPTION
---	---	AIRPORT PROPERTY LINE
+	+	AIRPORT REFERENCE POINT (ARP)
*	*	AIRPORT ROTATING BEACON
///	///	AVIGATION EASEMENT (if applicable)
▒	▒	BUILDING CONSTRUCTION
---	---	BUILDING RESTRICTION LINE (BRL)
---	---	DRAINAGE
---	---	FACILITY CONSTRUCTION
---	---	FENCING
+	+	NAVIGATIONAL AID INSTALLATION
---	---	RUNWAY END IDENTIFICATION LIGHTS (REIL)
---	---	RUNWAY THRESHOLD LIGHTS
---	---	SECTION CORNER
---	---	SEGMENTED CIRCLE/WIND INDICATOR
---	---	TOPOGRAPHIC CONTOURS
---	---	WIND INDICATOR (Lighted)

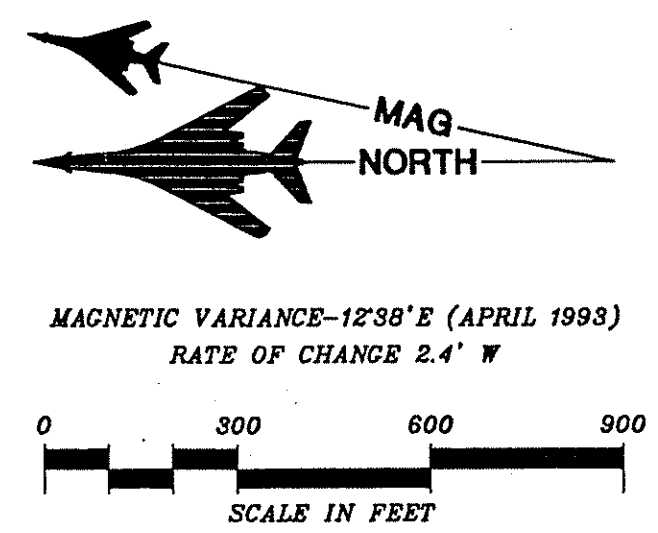


SUBMITTED BY: **Coffman Associates** ON THE DATE OF: _____

FOR APPROVAL BY: _____

APPROVED BY: _____ ON THE DATE OF: 7-29-93

Authorized Official's Name: _____
 Official's Title: CITY MANAGER



- GENERAL NOTES:**
1. Depiction of features and objects, including related elevations within the runway protection zones are depicted on the PROTECTION ZONES PLANS.
 2. Details concerning terminal improvements are depicted on the TERMINAL AREA PLAN.
 3. Recommended land uses within the airport environs are depicted on the AIRPORT LAND USE PLAN.

**COTTONWOOD MUNICIPAL AIRPORT
 AIRPORT LAYOUT PLAN**

COTTONWOOD, ARIZONA

PLANNED BY: Scott F. Gray
 DETAILED BY: Joe Gonzalez/W.B. Holland
 APPROVED BY: Pamela V. Coffman



No.	REVISIONS	DATE	BY	APP'D.