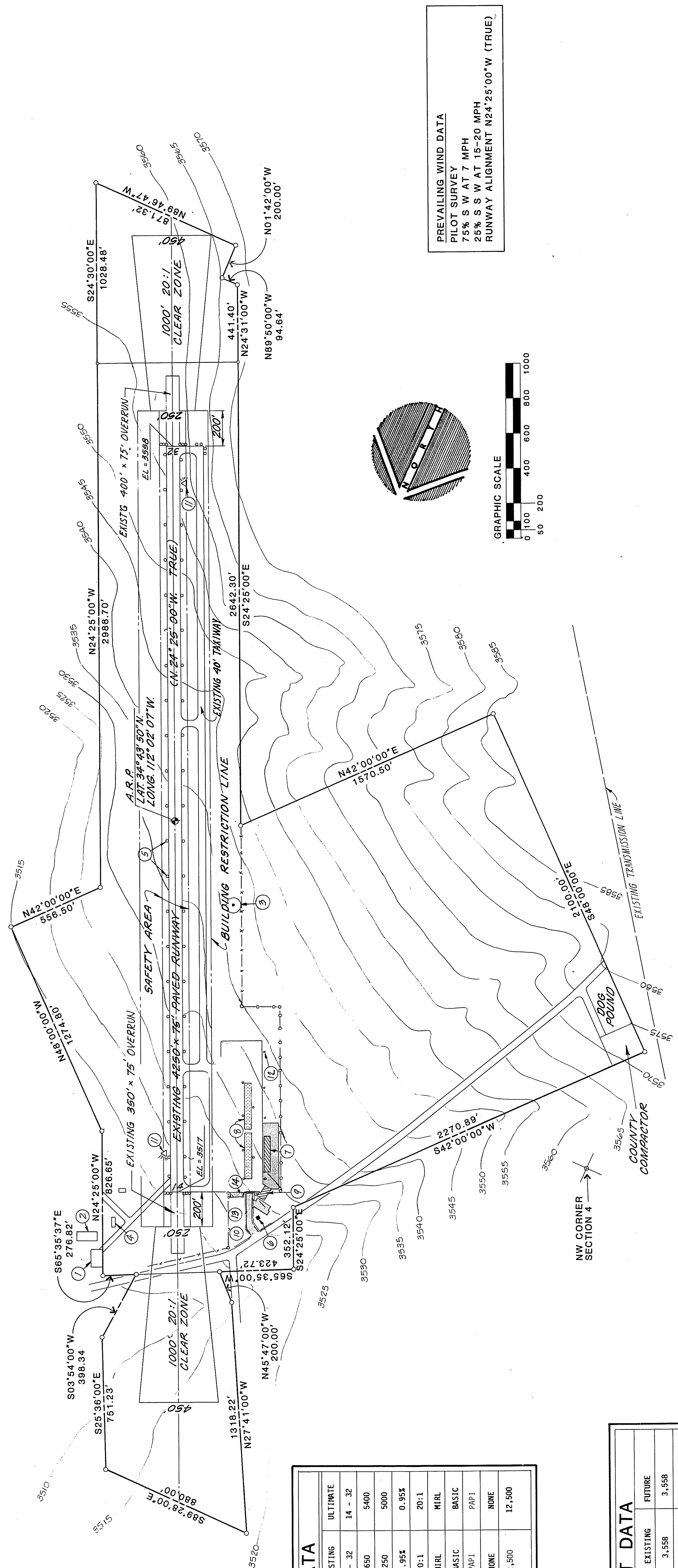
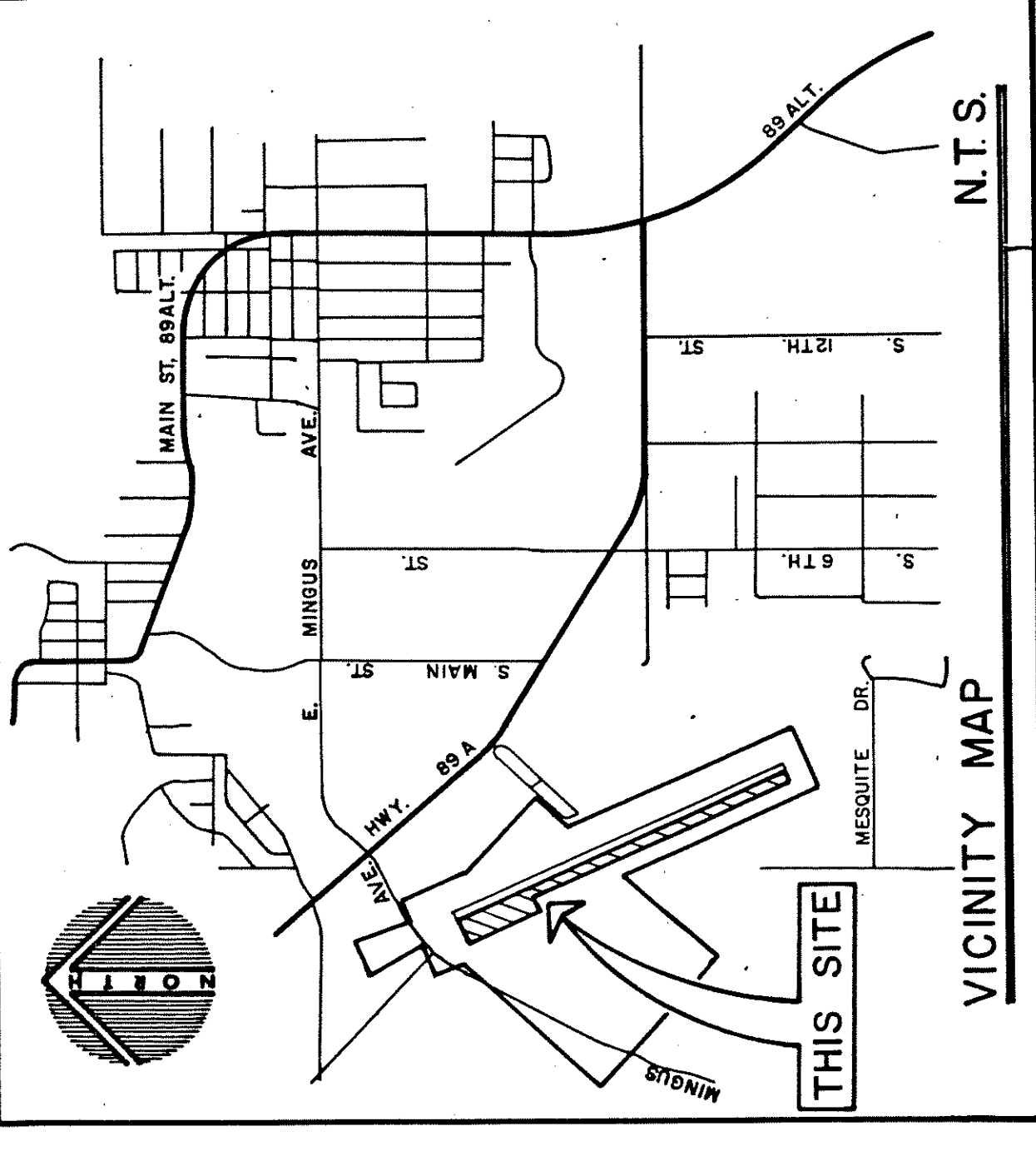
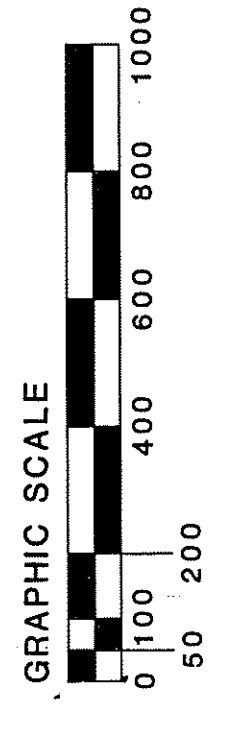
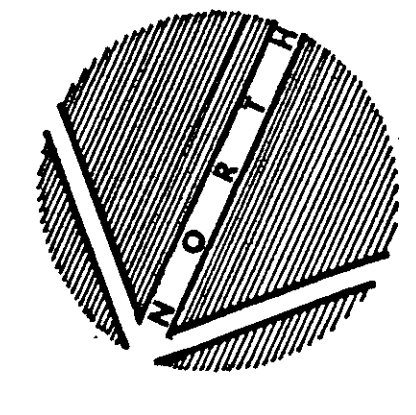


LEGEND

- 1 EXISTING FBO
- 2 EXISTING TERMINAL
- 3 EXISTING SEGMENTED CIRCLE AND WINDCONE
- 4 EXISTING GAS PUMP ISLAND
- 5 EXISTING MIRL
- 6 EXISTING ROTATING BEACON
- 7 FUTURE HANGARS
- 8 FUTURE SHELTERS
- 9 FUTURE FBO
- 10 FUTURE TERMINAL
- 11 EXISTING PAPI
- 12 SECURITY LIGHTING
- 13 FUTURE AUTO PARKING
- 14 EXISTING COMPUTER RAMP



PREVAILING WIND DATA
 PILOT SURVEY
 75% S W AT 7 MPH
 25% S S W AT 15-20 MPH
 RUNWAY ALIGNMENT N24°25'00"W (TRUE)



RUNWAY DATA

	EXISTING	ULTIMATE
RUNWAY IDENTIFICATION	14 - 32	14 - 32
LENGTH OF LANDING STRIP	4650	5400
RUNWAY LENGTH	4250	5000
EFFECTIVE GRADIENT	0.95%	0.95%
APPROACH SLOPES	20:1	20:1
LIGHTING	MIRL	MIRL
MARKING	BASIC	BASIC
NAVIGATION AIDS	PAPI	PAPI
INSTRUMENT RUNWAY	NONE	NONE
PAVEMENT STRENGTH (Aircraft: Gross weight w/single-wheel gear)	12,500	12,500

AIRPORT DATA

	EXISTING	FUTURE
AIRPORT ELEVATION	3,558	3,558
NORMAL MAX. TEMP.	99°F	99°F
TAXIWAY PAVEMENT	BASIC	BASIC
NAVIGATIONAL AIDS	UNICOM	NDB
BEACON	ROTATING	ROTATING
WIND INDICATOR	LIGHTED WINDCONE	LIGHTED WINDCONE
OPERATIONAL ROLE	B-U-1	B-U-2

EXHIBIT 'A'

AIRPORT LAYOUT PLAN

APPROVED BY: _____ DATE _____

COTTONWOOD MUNICIPAL AIRPORT		DATE	SHEET
DESIGN 7/2	SCALE	JOB NO.	7327
DRAWN 5/5	GRAPHIC	7327	JAN 1986
CHECK 7/7			6-10f-6-14

ellis-murphy
consulting engineers / land surveyors

REVISED 12/12/87 LCS

EXISTING 350' X 75' OVERRUN

150'
OBSTACLE FREE ZONE

RUNWAY 14/32

EXISTING TAXIWAY

EXISTING TAXIWAY

BUILDING RESTRICTION LINE

MINGUS AVE.

FUTURE TERMINAL OPERATIONS & PUBLIC PARKING AREA

ELEC. VAULT

COMMUTER RAMP

ACCESS ROAD

APRON

EXIST. BEACON

FIRE HYDRANT

FBO

21' - 24' TYP

45' TYP

EXISTING OPEN TIE-DOWNS

EXISTING PARKING APRON

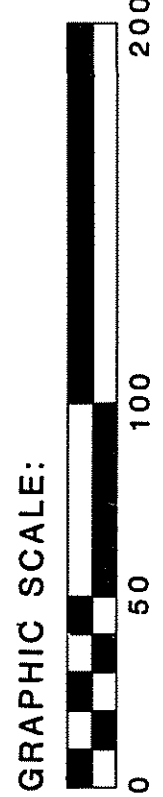
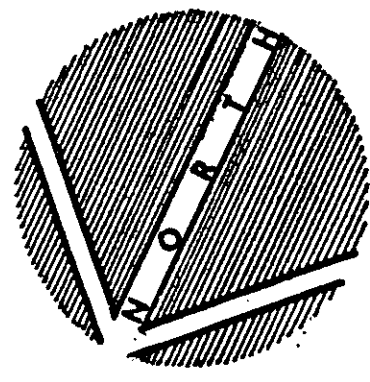
FUTURE 12-STALL OPEN SHELTER

FUTURE 12-STALL OPEN SHELTER

FUTURE 6-SPACE HANGAR

SECURITY LIGHTS (TYP.)

SECURITY FENCE



TERMINAL AREA PLAN

COTTONWOOD MUNICIPAL AIRPORT

DESIGN	ZJC	SCALE	JOB NO.	DATE	SHEET
DRAWN	SS	GRAPHIC	7327	JAN 1986	6-2 of 6-14
CHECK	JJK				

ellis-murphy consulting engineers / land surveyors

REVISED 12/2/87 LCS