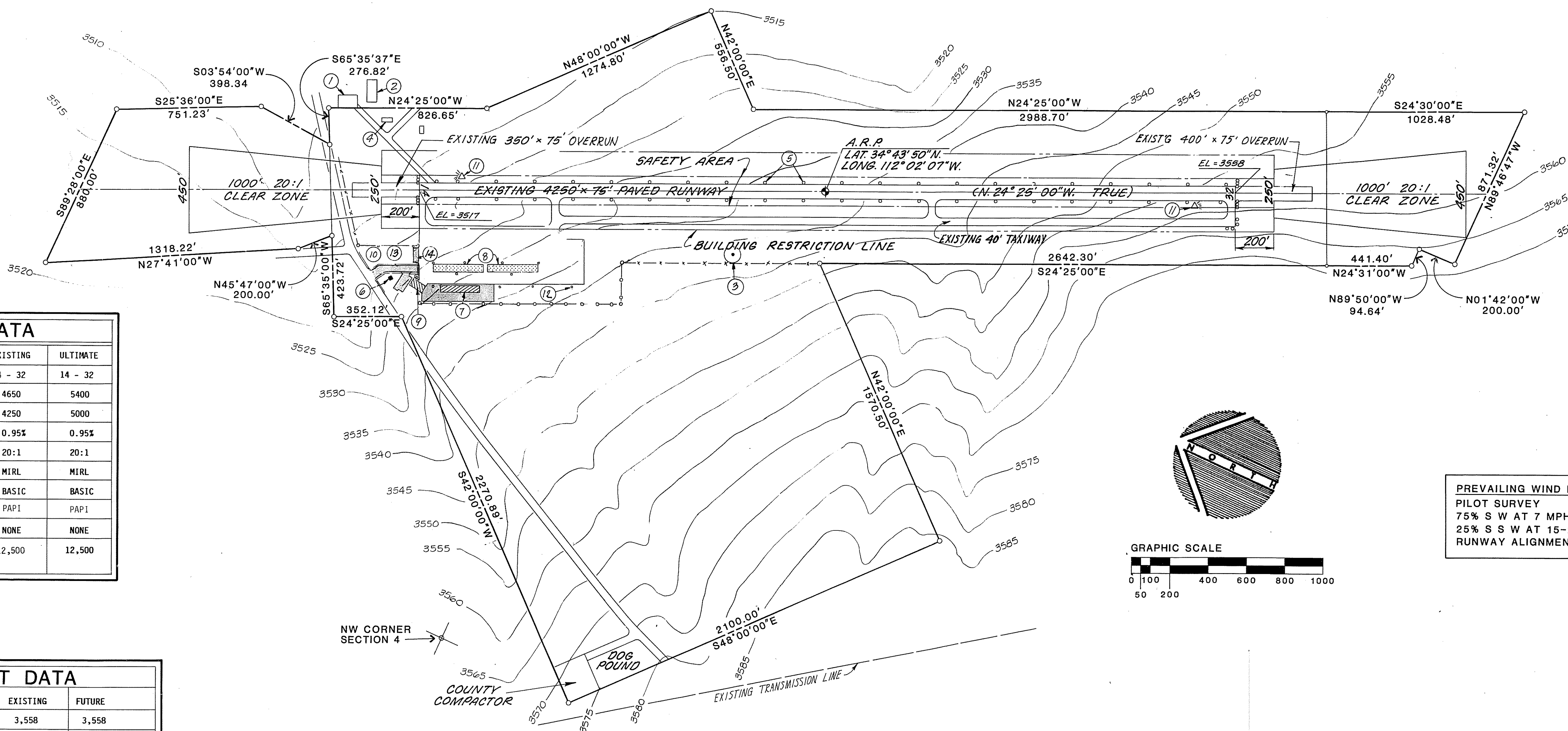
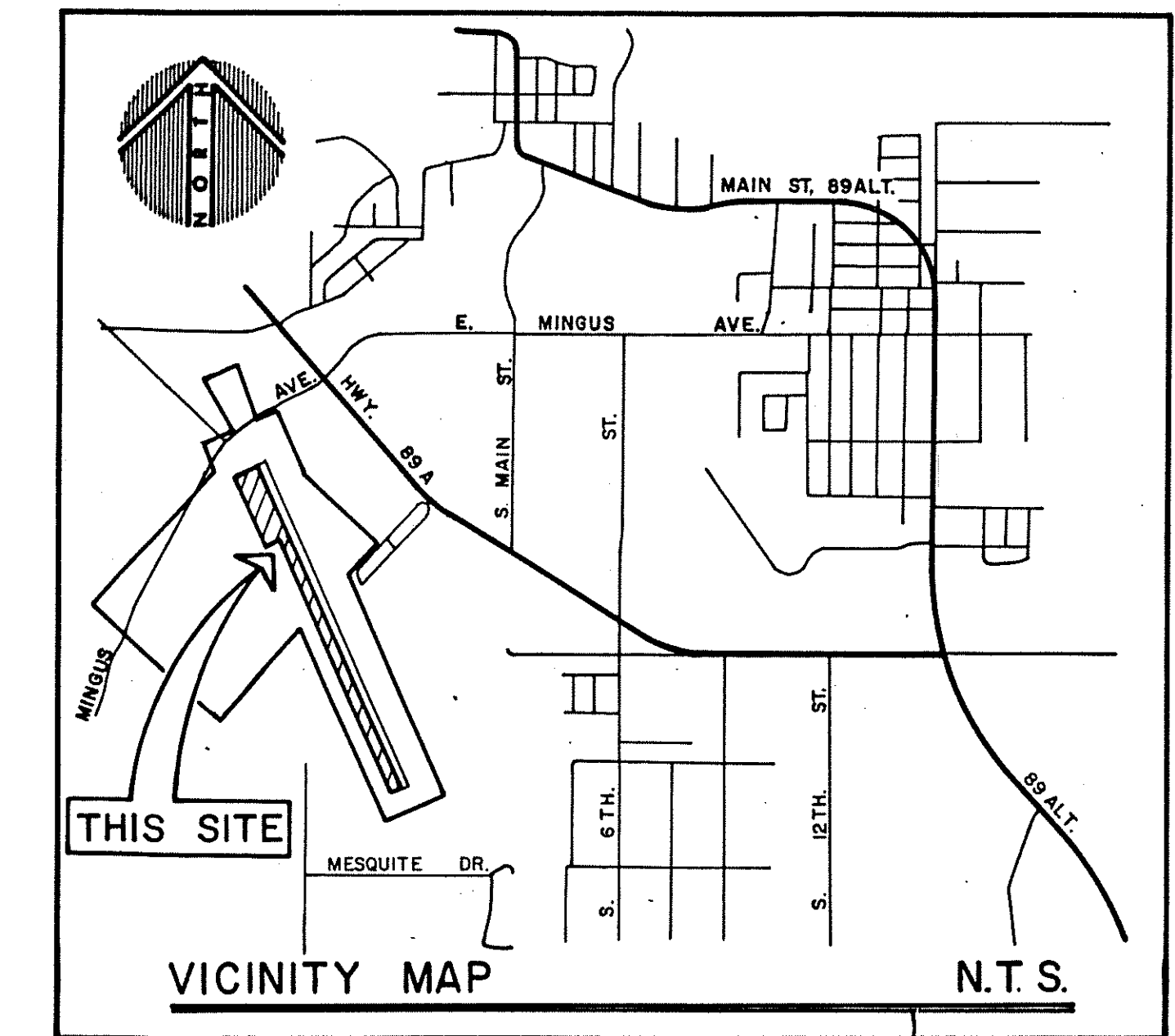


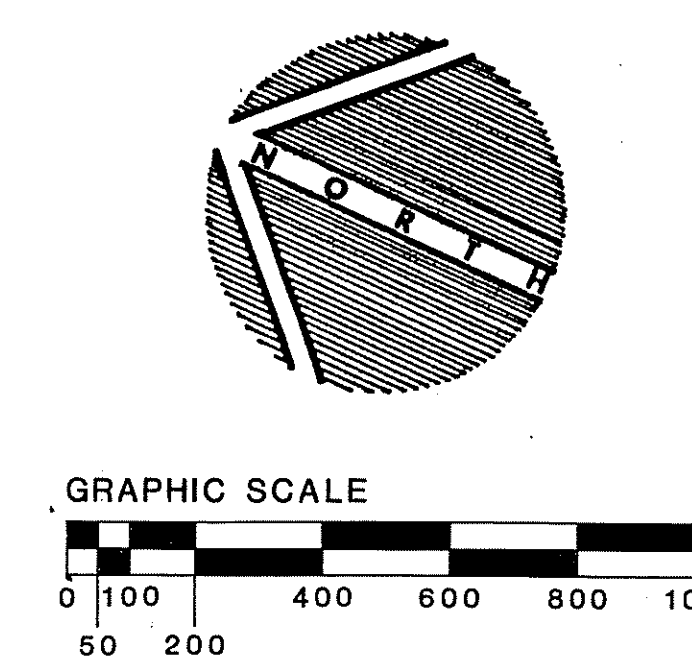
LEGEND	
①	EXISTING FBO
②	EXISTING TERMINAL
③	EXISTING SEGMENTED CIRCLE AND WINDCONE
④	EXISTING GAS PUMP ISLAND
⑤	EXISTING MIRL
⑥	EXISTING ROTATING BEACON
⑦	FUTURE HANGARS
⑧	FUTURE SHELTERS
⑨	FUTURE FBO
⑩	FUTURE TERMINAL
⑪	EXISTING PAPI
⑫	SECURITY LIGHTING
⑬	FUTURE AUTO PARKING
⑭	EXISTING COMMUTER RAMP



RUNWAY DATA		
	EXISTING	ULTIMATE
RUNWAY IDENTIFICATION	14 - 32	14 - 32
LENGTH OF LANDING STRIP	4650	5400
RUNWAY LENGTH	4250	5000
EFFECTIVE GRADIENT	0.95%	0.95%
APPROACH SLOPES	20:1	20:1
LIGHTING	MIRL	MIRL
MARKING	BASIC	BASIC
NAVIGATION AIDS	PAPI	PAPI
INSTRUMENT RUNWAY	NONE	NONE
PAVEMENT STRENGTH (Aircraft Gross weight w/single-wheel gear)	12,500	12,500

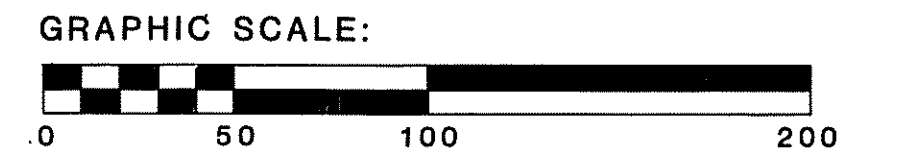
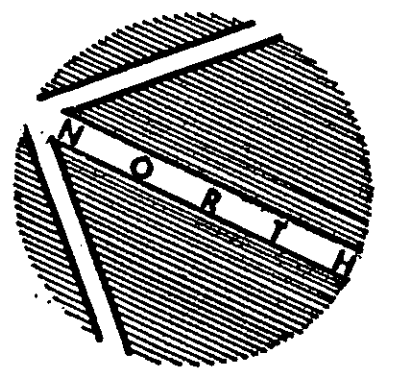
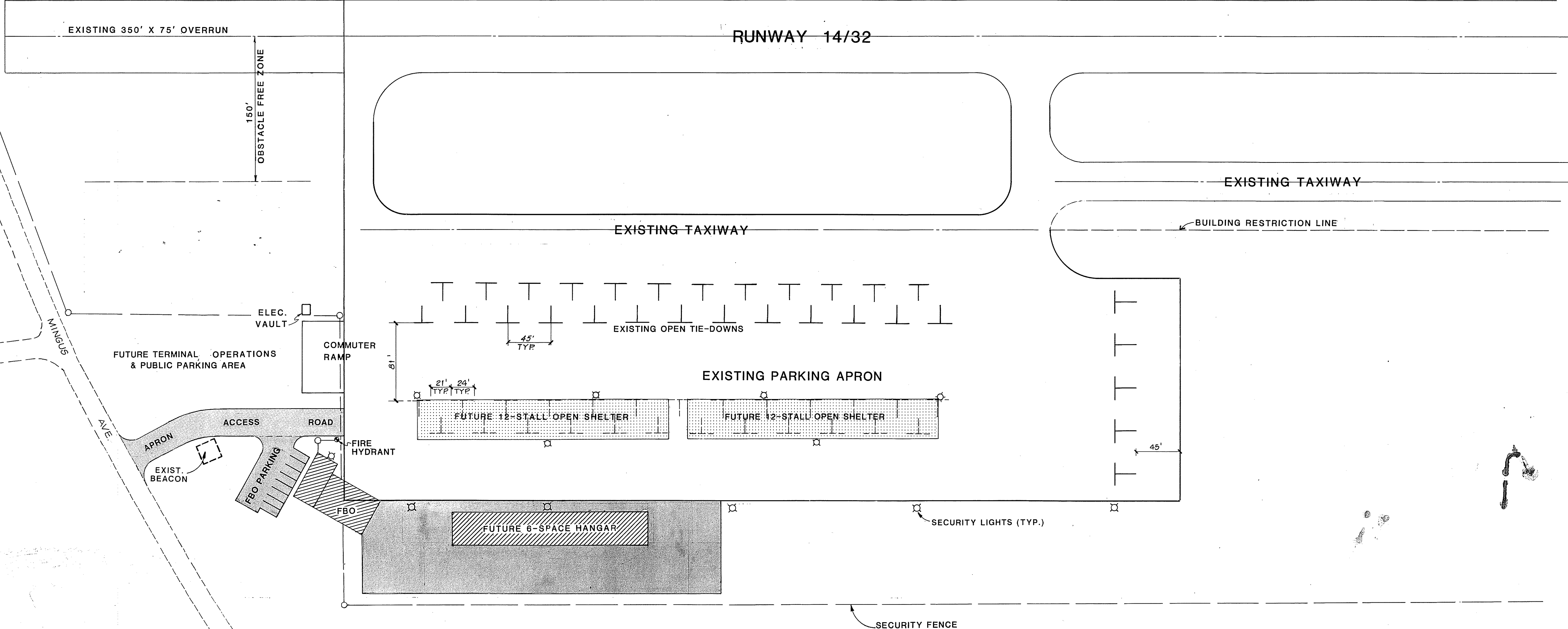
AIRPORT DATA		
	EXISTING	FUTURE
AIRPORT ELEVATION	3,558	3,558
NORMAL MAX. TEMP.	99°F	99°F
TAXIWAY MARKING	BASIC	BASIC
NAVIGATIONAL AIDS	UNICOM	NDB
BEACON	ROTATING	ROTATING
WIND INDICATOR	LIGHTED WINDCONE	LIGHTED WINDCONE
OPERATIONAL ROLE	B.U. 1	B.U. 2

**PREVAILING WIND DATA**  
 PILOT SURVEY  
 75% S W AT 7 MPH  
 25% S S W AT 15-20 MPH  
 RUNWAY ALIGNMENT N24°25'00"W (TRUE)



**EXHIBIT 'A'**

APPROVED BY:		AIRPORT LAYOUT PLAN			
		COTTONWOOD MUNICIPAL AIRPORT			
DESIGN MC	SCALE	JOB NO.	DATE	SHEET	
DRAWN SS	GRAPHIC	7327	JAN 1986	6-1 OF 6-14	
CHECK JV	ellis-murphy consulting engineers/land surveyors				



<b>TERMINAL AREA PLAN</b>				
<b>COTTONWOOD MUNICIPAL AIRPORT</b>				
DESIGN <i>M.C.</i>	SCALE	JOB NO.	DATE	SHEET
DRAWN <i>S.S.</i>	GRAPHIC	7327	JAN 1986	6-2 OF 6-14
CHECK <i>J.V.</i>				
 ellis-murphy consulting engineers / land surveyors				

REVISED 12/2/87 LCS