



CITY GOVERNMENT 101

COTTONWOOD FIRE DEPARTMENT

PRESENTER: CHIEF SAUNTMAN

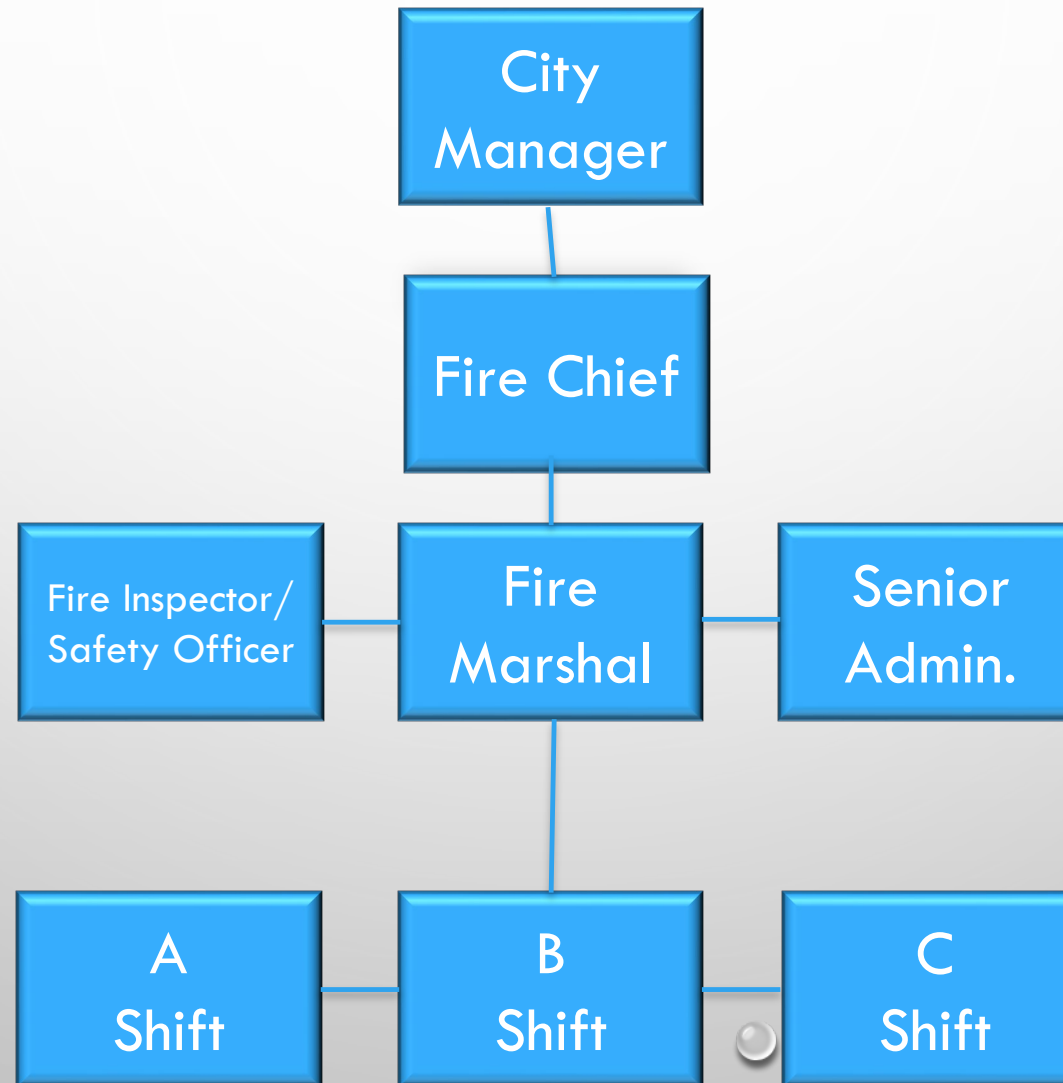


FIRE DEPARTMENT OVERVIEW

- *THE CITY OF COTTONWOOD FIRE DEPARTMENT IS A MUNICIPAL FIRE DEPARTMENT THAT HAS A PROUD TRADITION OF "SERVICE FIRST" TO A GROWING COMMUNITY OF MORE THAN 12,000 PEOPLE.*
- *CURRENTLY, COTTONWOOD FIRE DEPARTMENT OPERATES FROM A SINGLE FIRE STATION. WE EMPLOY 28 SWORN PERSONNEL, WORKING 48 HOURS ON-DUTY AND 96 HOURS OFF-DUTY.*
- *COTTONWOOD FIRE DEPARTMENT PROVIDES AN "ALL HAZARDS" RESPONSE TO THE CITY AND ADJOINING PORTIONS OF THE 86326 ZIP CODE:*
 - *ALL HAZARDS*
 - *FIRE SUPPRESSION*
 - *EMERGENCY MEDICAL SERVICES*
 - *WILDLAND FIRE SUPPRESSION*
 - *TECHNICAL RESCUE*
 - *HAZARDOUS MATERIALS MITIGATION*
 - *NATURAL AND MAN-MADE DISASTER RESPONSE*



ORGANIZATIONAL STRUCTURE





FIRE DEPARTMENT OPERATIONS

- OPERATIONS DIVISION
 - APPARATUS MAINTENANCE
 - TOOL AND EQUIPMENT MAINTENANCE
 - TRAINING AND SCHEDULING
 - PERSONAL PROTECTIVE EQUIPMENT MAINTENANCE
- TRAINING DIVISION
 - SUPPRESSION TRAINING
 - SPEC. OPS. TRAINING
 - CONTINUING EDUCATION
 - SCHEDULING TRAINING
- EMERGENCY MEDICAL SERVICES
 - EMS TRAINING
 - EMS PERSONAL PROTECTIVE EQUIPMENT
 - EMS TOOLS AND EQUIPMENT
 - EMS PROTOCOLS AND COORDINATION
- PREVENTION DIVISION
 - COMMUNITY OUTREACH
 - PUBLIC EDUCATION
 - CODE ENFORCEMENT/INSPECTIONS
 - FIRE INVESTIGATIONS
 - THREAT LIAISON OFFICER
- ADMINISTRATIVE
 - ORGANIZATIONAL DOCUMENTATION
 - POLICY DEVELOPMENT
 - STAFFING MANAGEMENT
 - PAYROLL/BENEFIT MANAGEMENT
 - PERSONNEL MANAGEMENT
 - GUIDANCE FOR CITY DIRECTIVES TO STAFF

COTTONWOOD FIRE DEPARTMENT RESPONSE AND SERVICES PROVIDED



- EMERGENCY RESPONSE (2021 – PRESENT)

- 4,112

(NATIONAL AVERAGE OF 1,500-2,500 CALLS PER FIRE STATION, PER YEAR)

- MUTUAL AID/AUTOMATIC AID RESPONSE (2021)

- 235

- SPECIAL OPS. RESPONSE (2021)

- 25

- COMMUNITY OUTREACH/PUBLIC EDUCATION

- 9,275 HOURS

(NUMBERS ARE LOW DUE TO COVID)

- INSPECTIONS/CODE REVIEW & ENFORCEMENT

- 1,813

(NUMBERS ARE LOW DUE TO COVID)

- INVESTIGATIONS

- 15

- THREAT ASSESSMENT/COORDINATION

- 20



Q & A