



Cottonwood Municipal Airport
MASTER PLAN UPDATE

PUBLIC OPEN HOUSE

WELCOME!

WHAT IS A MASTER PLAN?



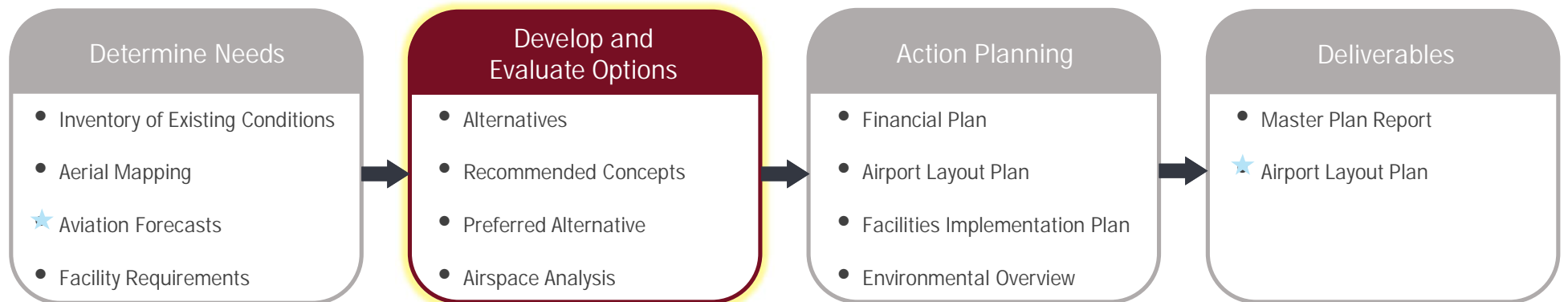
Describes the **need** for and **timing** of airport improvements.

Guides **future development** that:

- ✓ Is cost effective
- ✓ Satisfies demand
- ✓ Supports Airport optimization, enhancement, and safety
- ✓ Considers environmental and socioeconomic impacts

A **collaborative effort** with:

- ✓ Airport users and stakeholders
- ✓ Federal, State, and local agencies
- ✓ City/County officials
- ✓ The public

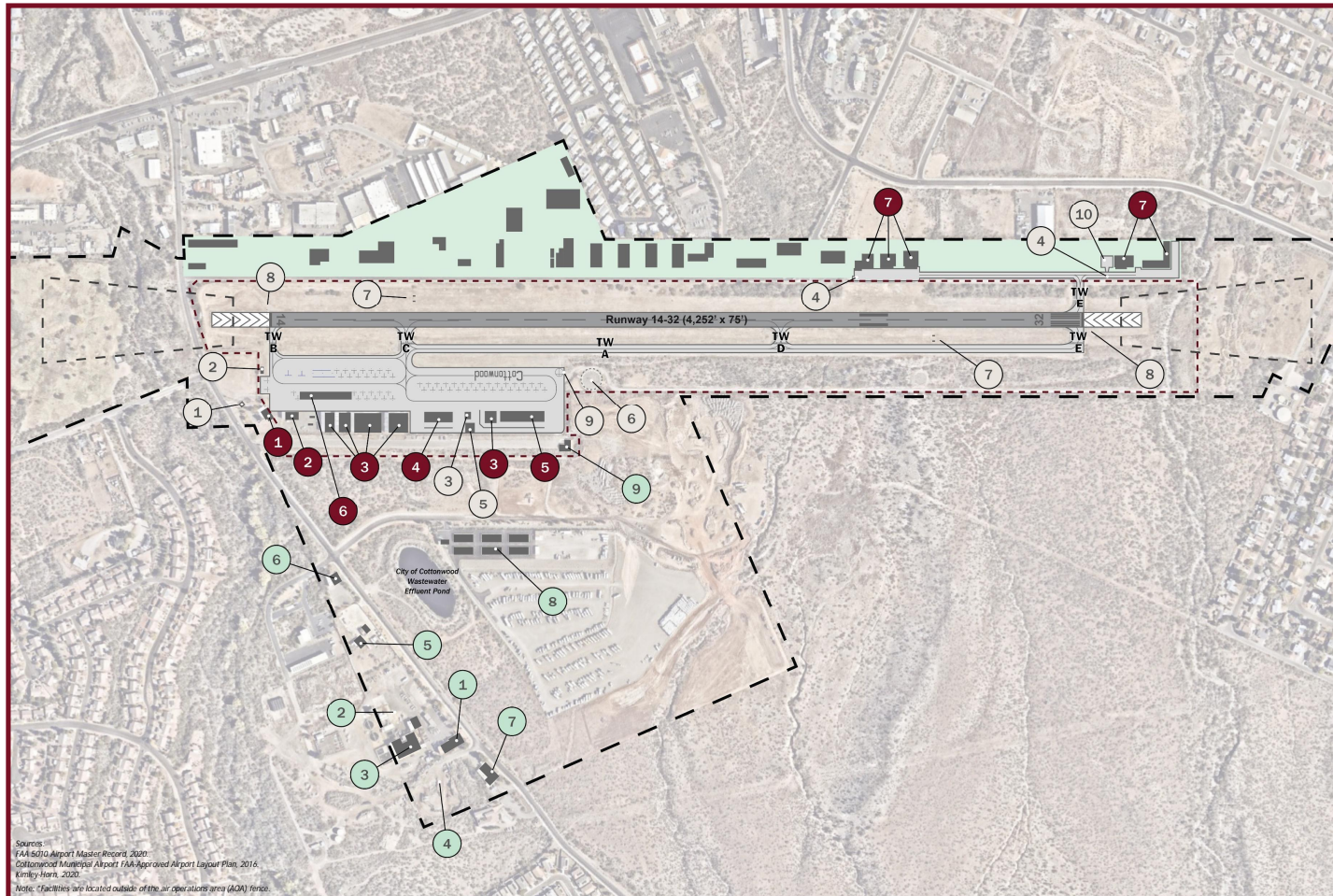


Stakeholder Involvement
(Meetings and Interviews, Agency and City Coordination)

★ Requires FAA Approval



EXISTING CONDITIONS



Sources:
FAA 5010 Airport Master Record, 2020
Cottonwood Municipal Airport FAA-Approved Airport Layout Plan, 2016
Kimley-Horn, 2020
Note: Facilities are located outside of the air operations area (AOA) fence.

- AIRFIELD BUILDINGS AND HANGARS**
 - 1. Terminal Building
 - 2. Air Service Hangar
 - 3. Conventional Hangar
 - 4. T-Hangar (6-unit)
 - 5. T-Hangar (10-unit)
 - 6. T-Shade Hangar
 - 7. Private Conventional Hangar*
- AIRPORT FACILITIES AND NAVAIDS**
 - 1. Rotating Beacon
 - 2. Electric Vault
 - 3. Fuel Storage - 12,000-gal. (100LL AvGas) / 10,000-gal. (Jet A)
 - 4. Private Fuel Storage1 - 16,000-gal. / 6,000-gal. (2 tanks)
 - 5. Wash Rack
 - 6. Segmented Circle/Lighted Wind Cone
 - 7. Precision Approach Path Indicators (PAPI-2)
 - 8. Runway End Identifier Lights (REILs)
 - 9. Helicopter Parking/Operating Area
 - 10. Private Helicopter Operating Area1
 - Runway Protection Zone (RPZ)
 - Air Operations Area (AOA) Fence
 - Airport Property Boundary
- OTHER FACILITIES AND BUSINESSES**
 - 1. City of Cottonwood Public Works
 - 2. Wastewater Treatment Plant
 - 3. Lift/Pump Station
 - 4. Solid Waste Transfer Station
 - 5. Fire Training Facilities
 - 6. Yavapai College Fire Training Center
 - 7. Humane Society
 - 8. Air Park Mini RV & Boat Storage
 - 9. Experimental Aircraft Association (EAA) Building
 - Cottonwood Airpark

0 300 600 ft.



AVIATION FORECASTS



Year	Based Aircraft Forecast	FAA-approved Operations Forecast (approved December 2020)	Refined Operations Forecast (based on Virtower*)
2019 (base year)	64	18,900	-
2021 (2-year forecast)	66	19,524	36,934
2024 (5-year forecast)	69	20,498	38,787
2029 (10-year forecast)	75	22,232	42,083
2039 (20-year forecast)	89	26,154	45,660

Sources: FAA National Based Aircraft Inventory Program; FAA Aerospace Forecast 2020-2040; FAA Terminal Area Forecast; Kimley-Horn, 2020.

*Refined operations based on Virtower data do not impact facility planning as part of this master plan process.

2039 BASED AIRCRAFT FORECASTS



Single-Engine Piston



Multi-Engine Piston



Turboprop

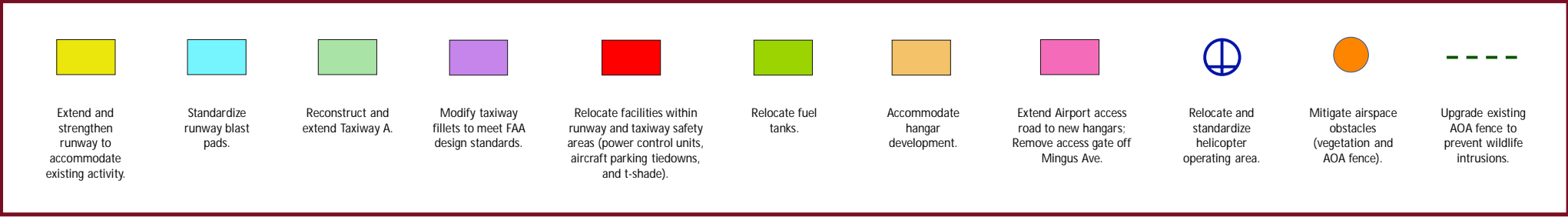
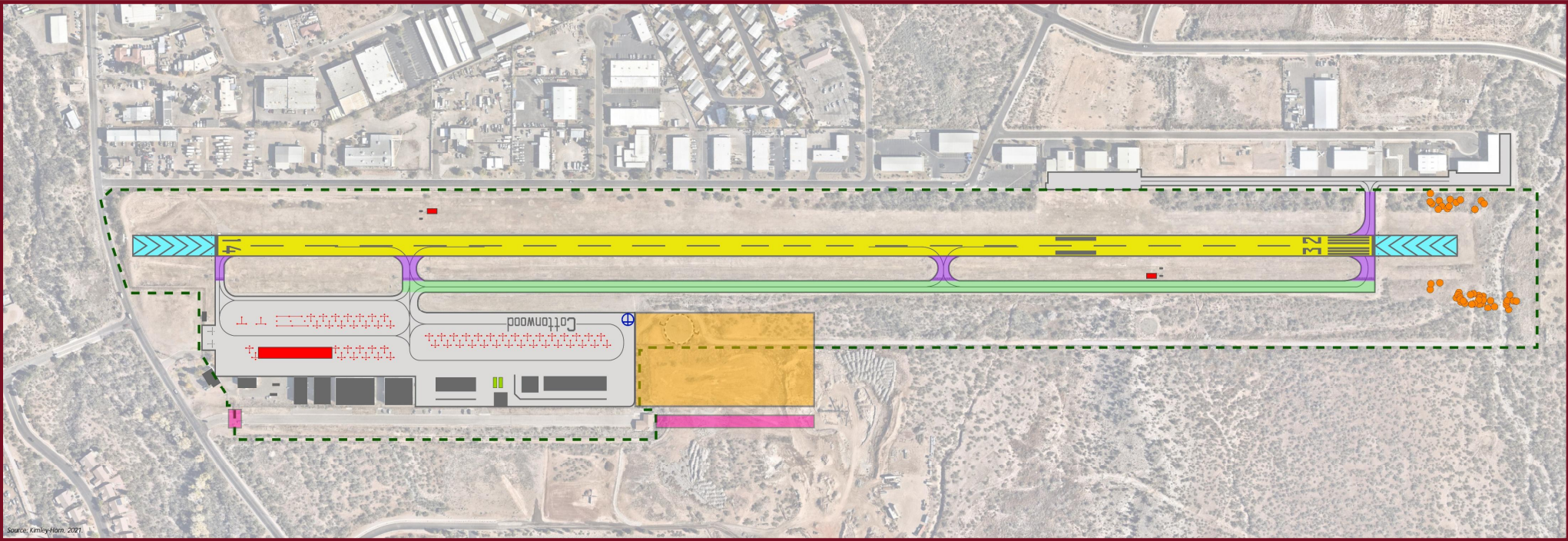


Jet



Rotorcraft

AIRPORT FACILITY NEEDS



ANALYZED AIRPORT FACILITIES



Significant Facilities Evaluated:

- Runway (length, width, orientation, pavement strength)
- Taxiway system
- Runway and taxiway safety areas
- Airspace
- Aircraft parking apron
- Aircraft hangars and tiedowns
- Fuel tanks
- Helicopter operating area
- Vehicle parking
- Air operations area (AOA) fence

Evaluation Criteria:

- ✓ Enhance operational safety
- ✓ Satisfy forecast demand
- ✓ Minimize off-airport impacts
- ✓ Minimize on-airport impacts
- ✓ Feasible and cost effective

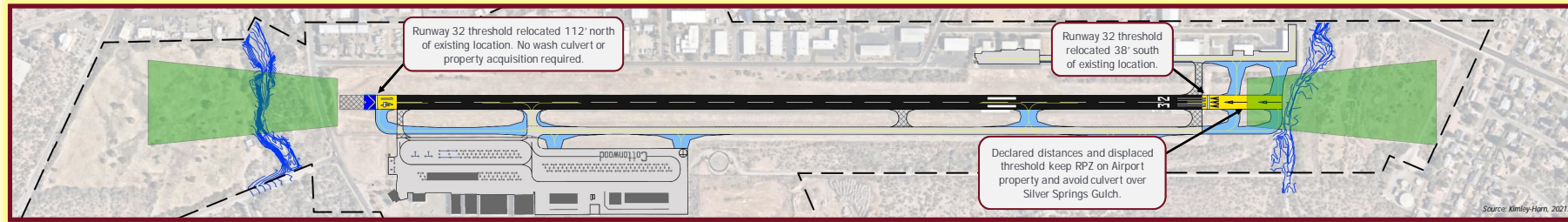


RUNWAY ALTERNATIVES



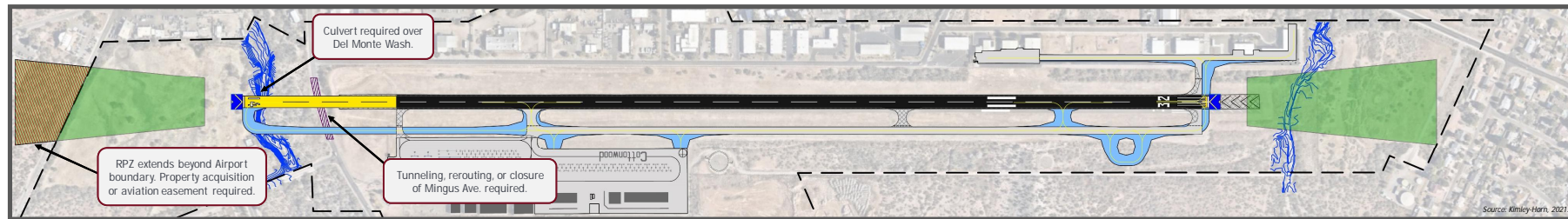
RECOMMENDED ALTERNATIVE: DECLARED DISTANCES

Total Runway Length: 4,787'



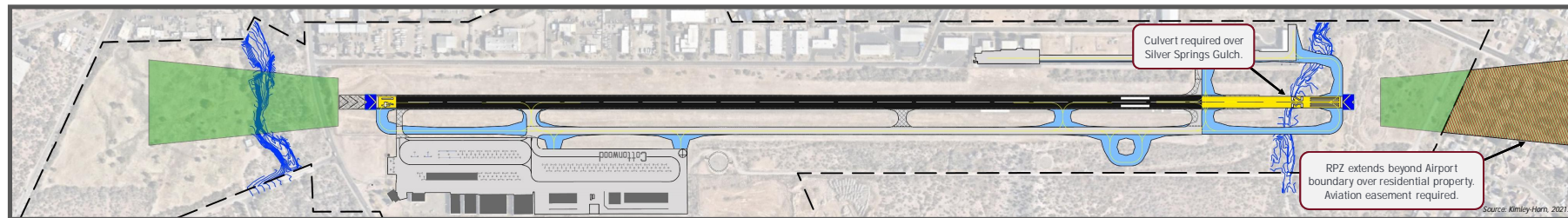
CONSIDERED BUT NOT RECOMMENDED: NORTHERN EXTENSION

Total Runway Length: 5,100'



CONSIDERED BUT NOT RECOMMENDED: SOUTHERN EXTENSION

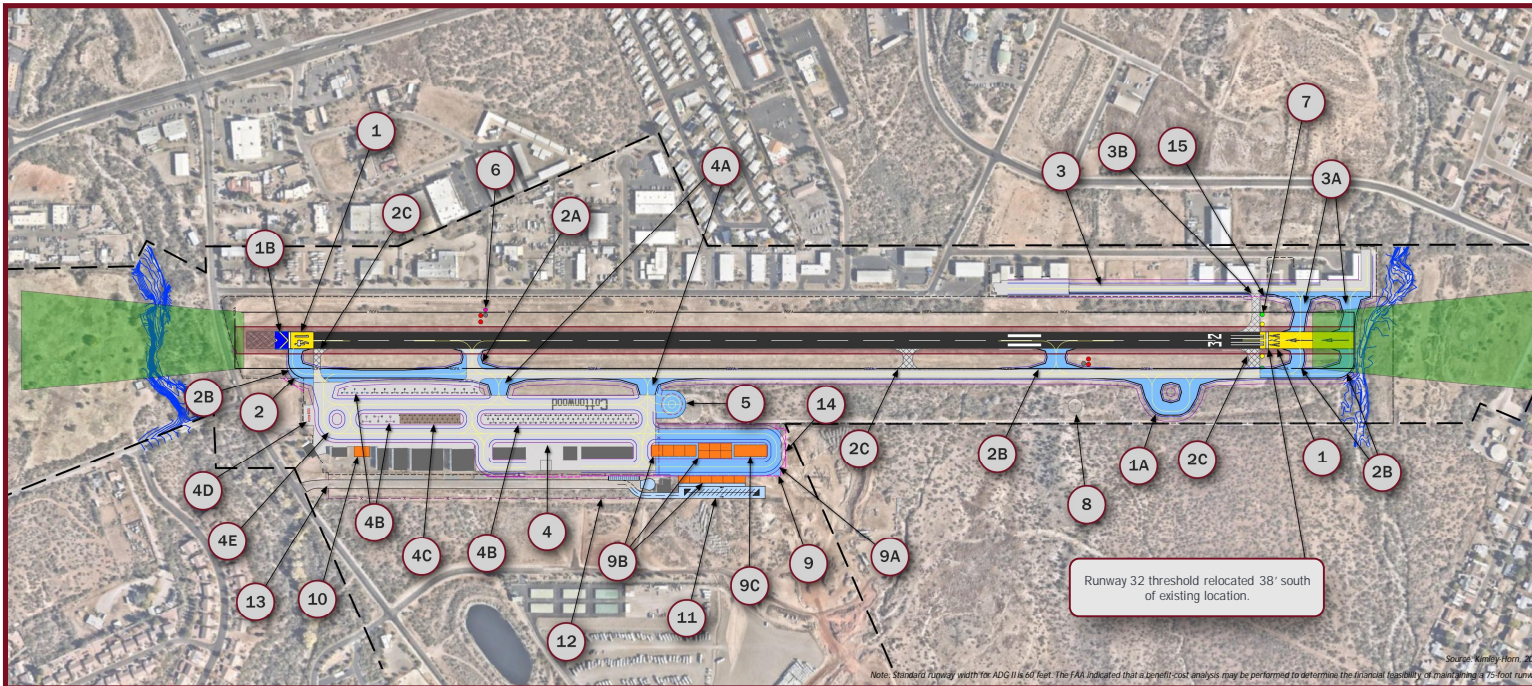
Total Runway Length: 5,100'



LEGEND

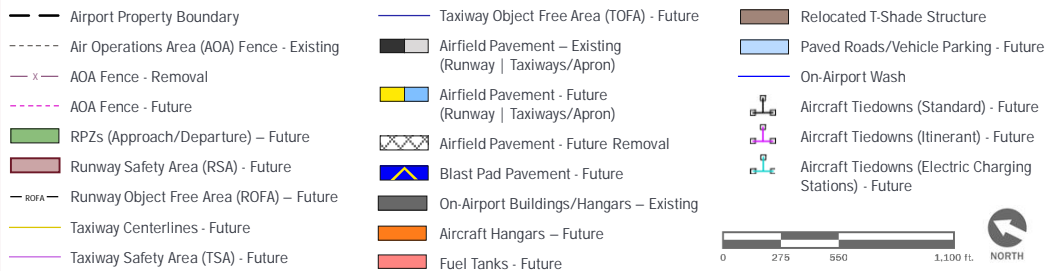
- Runway (Existing)
- Runway (Future)
- Runway Protection Zone (RPZ) – On Airport Property
- Runway Protection Zone (RPZ) – Off Airport Property
- Runway Blast Pad (Future)
- Taxiways / Aircraft Parking Apron (Existing)
- Taxiways (Future)
- Removed Pavement
- Roadway Removal Required (Northern Extension)
- Airport Property Boundary
- On-Airport Wash

20-YEAR RECOMMENDED DEVELOPMENT PLAN



PROJECT LIST

1. Design & Construct Runway Extension & Strengthening
 - 1A. Design & Construct Run-up Area
 - 1B. Standardize Runway 14 Blast Pad
2. Design & Construct Taxiway A Extension & Narrowing
 - 2A. Standardize Existing Taxiway Connectors
 - 2B. Design & Construct 4 Taxiway Connectors
 - 2C. Remove Taxiway Pavement
3. Design & Construct East Taxiway Modifications
 - 3A. Design & Construct 2 Taxiway Connectors
 - 3B. Remove Taxiway Pavement
4. Design & Construct Apron Reconfiguration
 - 4A. Design & Construct 2 Taxiway Connectors
 - 4B. Relocate Aircraft Tiedowns
 - 4C. Relocate T-Shade Structure
 - 4D. Relocate Fuel Tank
 - 4E. Restripe Taxiway Centerlines
5. Design & Construct Relocated Helicopter Operating Area
6. Relocate Runway 14 PAPI PCU
7. Relocate Runway 32 Runway End Identifier Lights (REILs)
8. Relocate Segmented Circle with Lighted Wind Indicator
9. Design & Construct Hangar Development Area
 - 9A. Design & Construct Taxiway (Includes Grading)
 - 9B. Design & Construct 16 Box Hangars
 - 9C. Design & Construct Six-Unit T-Hangar
10. Design & Construct Box Hangar
11. Design & Construct Roadway & Vehicle Parking
12. Remove AOA Fence
13. Remove Access Gate
14. Construct AOA Fence
15. Lower AOA Fence



RUNWAY LENGTH & DECLARED DISTANCES

Existing Runway 14-32 Dimensions	4,252' x 75'	
Future Runway 14-32 Dimensions	4,787' x 75'	
<hr/>		
Future Declared Distances	Rwy 14	Rwy 32
Take Off Run Available (TORA)	4,402'	4,787'
Take Off Distance Available (TODA)	4,787'	4,787'
Accel. Stop Distance Available (ASDA)	4,547'	4,787'
Landing Distance Available (LDA)	4,547'	4,402'

NEXT STEPS & PUBLIC INPUT



Next Steps

- Finalize Alternatives chapter, incorporating stakeholder feedback.
- Meet with FAA to discuss Recommended Development Plan (RDP).
- Draft Implementation and Financial Analysis working paper.
- Draft Airport Layout Plan (ALP).
- Submit final ALP to FAA.

Public Input

Your participation and input are very important to the master planning process.

Please complete a [comment form](#) and place it in the designated collection area.

THANK YOU FOR ATTENDING!

